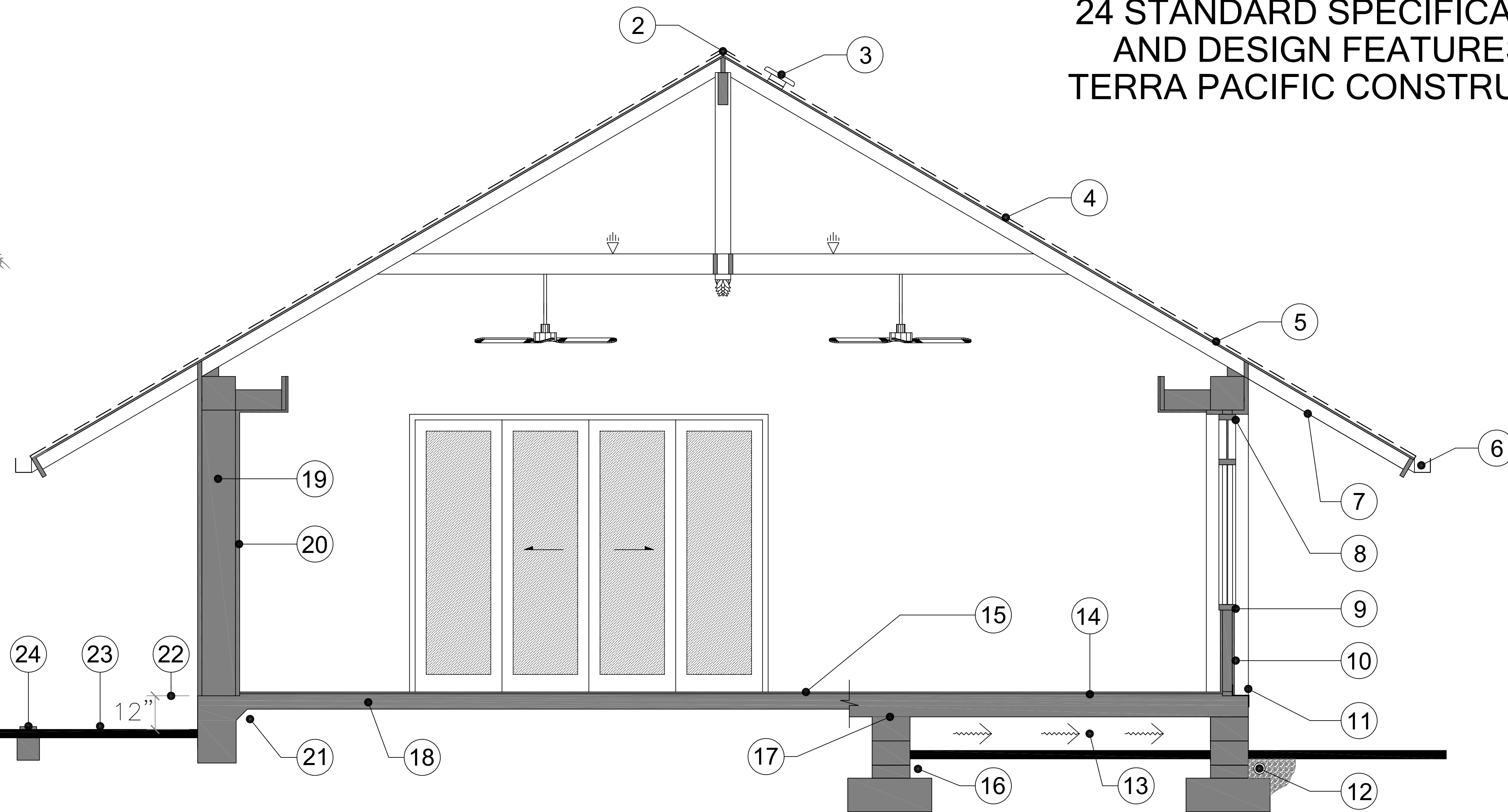
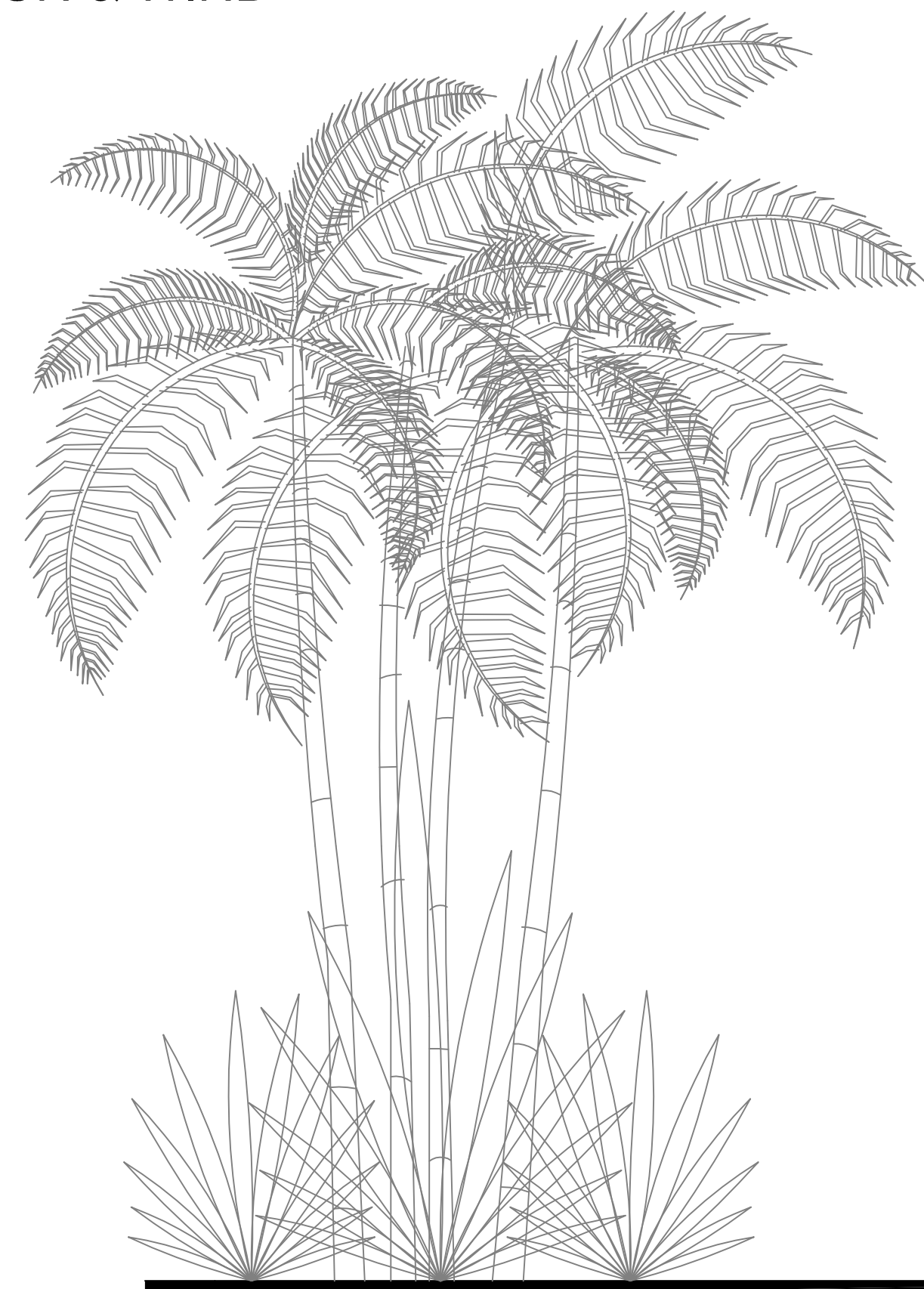


24 STANDARD SPECIFICATIONS  
AND DESIGN FEATURES OF  
TERRA PACIFIC CONSTRUCTION



## KEY CODE:

- |  |   |
|--|---|
| <ul style="list-style-type: none"> <li>① SITE THE HOUSE TO MAXIMIZE NATURAL VENTILATION</li> <li>② MAXIMIZE VENTILATION TO PREVENT MOISTURE ACCUMULATION</li> <li>③ SOLAR POWERED VENTILATION TO ACTIVELY REMOVE WARM MOIST AIR</li> <li>④ "POLYGUARD TU PLUS ROOF SHIELD" WITH EXTRA WIDE COPPER VALLEY FLASHING</li> <li>⑤ MARINE-GRADE WOOD AND PLYWOOD FOR ROOFING</li> <li>⑥ GUTTERS TO PREVENT RUNOFF RAIN WATER FROM COLLECTING AROUND HOUSE</li> <li>⑦ PENETRATING TREATMENT WITH EPOXY TO SEAL ALL EXTERIOR WOODS</li> <li>⑧ "VOLCUM" WATERPROOFING FOR ALL WINDOWS AND DOORS</li> <li>⑨ COPPER AND "FORTI-FLASH" FLASHING FOR ALL WINDOWS &amp; DOORS</li> <li>⑩ EXTERIOR FINISH SPECIFICATIONS ARE IMPERVIOUS TO TERMITE AND MOISTURE</li> <li>⑪ COPPER BASE PLATE AND THRESHOLD DETAIL AROUND PERIMETER OF ALL WALLS</li> <li>⑫ PERFORATED PIPE DRAINAGE SYSTEM AROUND FOUNDATION PERIMETER</li> </ul> | <ul style="list-style-type: none"> <li>⑬ VENTILATION UNDER POST &amp; PIER TO PREVENT MOISTURE ACCUMULATION</li> <li>⑭ VAPOR BARRIER UNDER ALL WOOD FLOORS</li> <li>⑮ SEAL CONCRETE SLABS TO PREVENT MOISTURE FROM ENTERING THE HOME</li> <li>⑯ GROUT WITH "TERMISHIELD" FIBER, COVERS GROUND UNDER POST &amp; PIER FOUNDATIONS</li> <li>⑰ COPPER TERMITE COVERS ON FOUNDATION PIERS</li> <li>⑱ TERMITE GUARDS FOR ALL PLUMBING &amp; ELECTRICAL PIPES IN CONCRETE SLABS</li> <li>⑲ CONCRETE CONSTRUCTION IMPERVIOUS TO PESTS - TERMITES DONT EAT CONCRETE!</li> <li>⑳ CEMENTITIOUS PLASTER BOARD WITH IMPERIAL PLASTER ON INTERIOR WALLS</li> <li>㉑ TREAT FOR TERMITES PRIOR TO POURING CONCRETE FOUNDATONS</li> <li>㉒ CONCRETE SLABS RAISED 12" ABOVE GRADE TO MINIMIZE MOISTURE AROUND HOME</li> <li>㉓ NO PLANTINGS WITHIN 24" OF HOUSE WALLS TO MINIMIZE MOISTURE AROUND HOME</li> <li>㉔ "CENTRICON" TERMITE GUARD SYSTEM AROUND PERIMETER OF PROPERTY</li> </ul> |
|--|---|