



FOR IMMEDIATE RELEASE

Terra Pacific Construction LLC
PO Box 868
Hanalei, HI 96714
808-828-0070

TARGETING THE FIRST LEED® PLATINUM RESIDENCE IN KAUA'I, HAWAII

In 2009, Terra Pacific Construction began building Kalihi Kai Vista which is targeted as the First LEED® Platinum Home on Kaua'i. LEED® (Leadership in Energy and Environmental Design) certification is administered by the USGBC (U.S. Green Building Council) and is the leading accreditation for building green in America. The program is point-based with the points awarded via 3rd party inspections for the use of sustainable materials and construction practices as well as many other aspects of design and construction that relate to energy conservation, environmental sustainability and erosion control. LEED® Platinum is the highest level of building green.

LEED PLATINUM INITIATIVES

It is anticipated that Kai Vista will meet the required points to reach LEED® Platinum Status. Much of the home was constructed with select reclaimed materials. All custom hardwood windows and doors have been manufactured using reclaimed teak and incorporate Low-E glass. Terra Pacific specializes in the use of sustainable building materials such as FSC (Forestry Stewardship Council) certified lumber which has been used throughout the project for ceilings, truss work, flooring, decking and shingles. All cabinets, millwork and countertops are constructed from sustainable sources. Design and construction parameters minimize waste and promote durability which also has the effect of reducing both construction and long term ownership costs. USGBC approved materials with low VOCs are both good for our planet and improve air quality for the occupants. Alternative energy sources include an 8.3 KW photovoltaic systems and three 120 gallon solar hot water systems. Energy efficient measures include radiant barrier in all ceilings and walls as well as a ventilation plan that utilizes both solar powered and ASHRAE (American Society of Heating, Refrigeration, and Air-Conditioning Engineers) fans to minimize solar heat gain and maximize warm air flow out of the home. Energy Star pumps, fans, appliances, and lighting fixtures, including the use of LED light bulbs, reduce energy consumption dramatically - current estimates are by 50% or more. Custom low flow faucets and dual flush toilets will save thousands of gallons of water annually. Heat island effects from the building structures and surrounding hardscapes are minimized through the use of high SRI (Solar Radiation Index) surface color selections for materials such as roofing, exterior plaster, garden paths, and the driveway. Kai Vista's landscape plan incorporates rare native species which will be colonized for future distribution into the community. Our site plan's main focus is to maintain the natural aspects of the property by controlling run-off and erosion. To this end, landscape design specifications such as drought tolerant plants, rain gardens, boulder walls, and drainage systems, including drywells, serve to protect the surrounding environment. A 5000 gallon rain water catchment cistern, located under the reef of the swimming pool, will supply irrigation requirements. Finally, during construction Terra Pacific has run a recycling program for all bottles, cans and packaging as well as a waste management program that achieved less than 1% waste from nominal lumber and plywood which helped saved thousands of pounds of debris from ending up as landfill.

Part of the LEED® Certification Process includes educating the general public and businesses about energy conservation and sustainable construction practices. We believe that sharing information about Kai Vista will help inspire others to participate in their own daily environmental stewardship and lead the way for responsible building practices on our beautiful island. People need to know that building green is a great way to ensure high quality during the construction process while being responsible to the environment and creating a healthy place to live. An informed general public can make a difference.

Completion Date: December 2010

See reference information below - may be used for Media Release

If you would like further information or would like to schedule a tour of this remarkable property,

please contact Teresa Lambden at 808-635-4211 or teresa-terrapacific@live.com

- 30 -

REFERENCE INFORMATION AND PHOTOGRAPHS

KALIHI KAI VISTA

~ the most Environmentally Advanced Residence on Kaua'i ~

PROJECT DESCRIPTION

Located on Kaua'i's famed North Shore, the 3 acre home site is dramatically situated amongst forty coconut trees at the edge of the bluff high above Kalihiwai Bay. Kai Vista commands breathtaking views of the Pacific Ocean with the Anini Reef and world renowned Kalihiwai Surf Break in the foreground. In a 180 degree panorama, the sweeping vista continues from Bali Hai to the impressive Namokama Mountain Range with full view of the Kalihiwai Valley below. A footpath meanders from the home site down the bluff to the lower tier of the property where a waterfall and enchanting ponds await.

In an East meets West fusion of tropical architecture from around the Pacific Rim, Kalihi Kai Vista has a total of 9000 square feet under roof which includes the grand lanai, long breezeways, private lanais for each bedroom, and a second story observation deck - the perfect spot for whale watching. Kai Vista's 4500 square foot interior features 4 bedrooms, 4 baths, 2 kitchens and media room. Directly off the great room, the grand lanai offers a relaxing environment for all occasions and pool-side dining for 12. Evening ambiance is enhanced by the fire pit designed into the ocean-side infinity pool. The spacious great room includes formal dining for eight and an impressive gourmet kitchen featuring a large island with breakfast bar and premium stainless appliances complete with two wine coolers. A custom sectional complimented by two deep armchairs provides plentiful seating in a casually elegant atmosphere. Amenities include a built-in punee (daybed) and a multi-media system with integrated Harmon Kardon sound system. Two resort-style master bedrooms with private lanais and spa style en-suites flank the great room. The ocean-view master suite features a trellised courtyard with an oversized outdoor tub in rough hewn marble. The mountain-view master suite styles a canopy bed, lounge chairs and wet bar. An open-air breezeway surrounding the zen garden leads to a two bedroom guesthouse featuring the media room, kitchenette and a luxurious tropical bathroom. Adjacent to the guesthouse is the Hawaiian Pavilion with a second full kitchen, dining and living room. Its fan-raftered roof with authentic bamboo ceilings lends an atmosphere of old Hawaiian charm; ideal for intimate entertaining or hosting a luau.

In addition, there is 2,250 square foot under roof in a separate compound - affectionately known as "the Garden House" which effectively comprises a second residence. Amenities include a gym, office, workshop with kayak and surf board racks, open-air yoga bale, large lanais with outdoor kitchen, 5th bedroom, 3 piece bathroom, additional laundry facilities, garden storage hut and garage. The 5th bedroom can just as easily be used as a kid's bunkhouse or caretaker's suite.

Kalihi Kai Vista's architectural and fixed interior elements were custom designed to world class standards and specified in sustainable materials by the Terra Pacific Design Team led by Rob Lambden, Director of Design. The extraordinary level of hand-craftsmanship is second to none in the Hawaiian Islands. Unique features include twelve carved panels that encircle the grand lanai showcasing the courageous migration of peoples during the trans-oceanic exploration and discovery of Polynesia. One of the final panels of this "Grand Saga" portrays the early settlement of Kaua'i. Numerous carved limestone panels illustrate Kaua'i's unique fauna, the centerpiece being a dramatic 100 square foot foliage carving "floating" on the entry bale wall. An array of exceptional wood carvings include lotus flowers adorning structural truss work with the crown jewel being the carved bamboo leaf windows around the cupola high above the great room. Custom designed tubs and sinks in solid granite and marble highlight each spa-style bathroom. All Kai Vista bathrooms feature open linen cabinets, water closets and private outdoor showers finished in exotic stone work with carved accents. Artwork includes a collection of antiques and rare artifacts from around the Pacific Rim with commissioned works playing tribute to Kaua'i's natural beauty. Furnishings are specifically designed for each room by KU dé TA DESIGN® - our in-house design firm specializing in culturally relevant, high-end decor and landscapes utilizing sustainable materials. The zen garden, characterized by antique pavers, planters, and stone elements is defined by its wrap-around koi pond. A carved lava stone water feature illustrating 16 warriors performing the Haka Ceremony in a war canoe is the focal point. Kalihi Kai Vista's landscape plan incorporates a wide variety of exotic fauna focusing on endemic species and alluring elements such as a meditation zone and hidden pathways. An abundance of fruit trees and an organic vegetable garden provide healthy foods year round. The high point is the 55 foot infinity pool with the expanse of the Pacific Ocean as its backdrop. Bordered by 3500 square feet of western red cedar decking, it is situated bluff-side adjacent to the grand lanai. This dramatic pool incorporates a fire pit, shallows reef and "floating" 12 person spa.

Few properties compare, fewer still offer Kalihi Kai Vista's level of tropical luxury combined with LEED Platinum status. Ultimately, it is the striking setting and epic views which capture the essence of Hawaii's natural beauty that will transfix your senses.





Wires Surf Break at Anini Reef and the Pacific Ocean Beyond



Nakamara Mountain View and Kalihiwai Valley

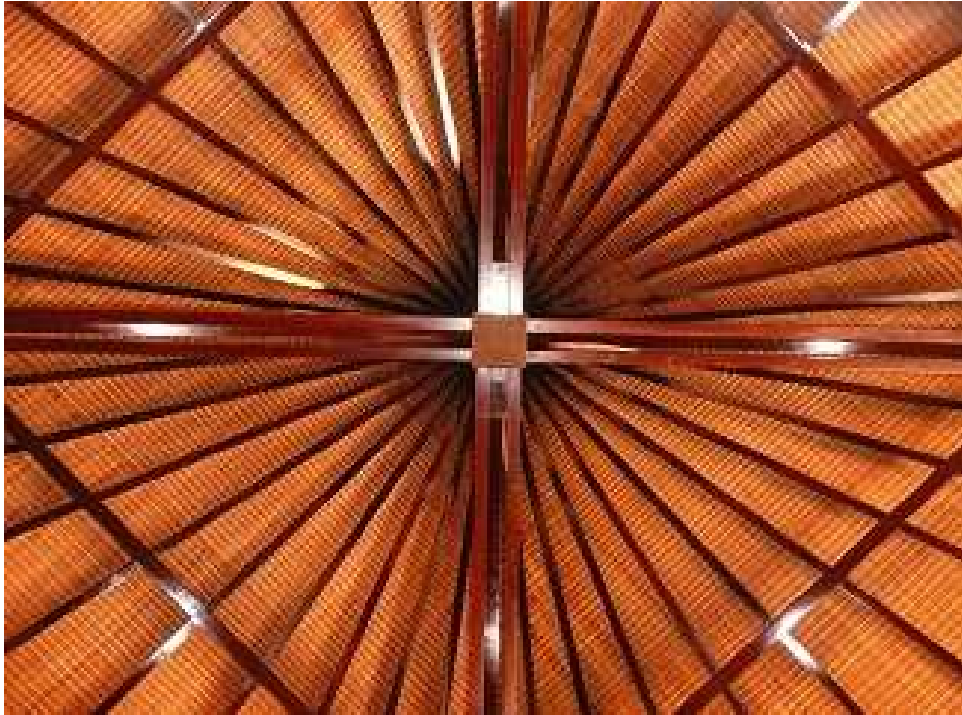


Famous Kalihiwai Surf Break View from Whale Watching Tower



Kalihi Kai Vista Under Construction





FSC- Plantation Grown Hardwood Truss Work





Cupola Finish Work



Cupola Finish Work



Carved Lotus Flower at King Posts



Main Lanai Carved Panels



Bamboo Leaf Cupola Window



Wood Work before Final Finishing



Breezeway Beams and T&G Ceiling





Interior Plaster Work



Windows & Doors



Entry Doors



Haliconia Carved Door



Entry Bale Copper Clad Doors



Carved Closet Doors



The Old Teak Houses Demolished with Wood Reclaimed for Kai Vista Windows and Doors





Carving the Main Lanai “Grand Saga” Panels





Finishing the Main Lanai “Grand Saga” Panels





Hardwood Floors



Great Room Hardwood Floors



Green Andesite Tile Work



Shower Tile



Kalihi Kai Vista Road Sign



Kai Vista Carved Limestone Panel



Limestone Panel at Entry Bale



Installing Limestone Panels at Master 2 Bathroom



Zen Garden Antique Stone Carving



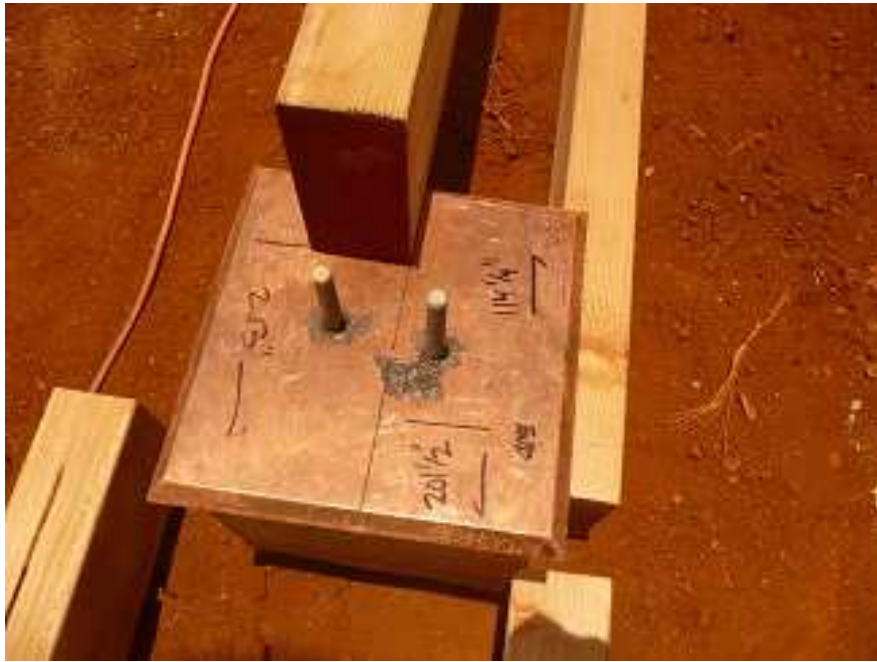
Zen Garden Carved Water Feature



FSC Cedar Shake Roof being Installed



Low- E Glass Window Shown with Finished Plaster



Copper Termite Covers for Girders



Copper Clad Fascia



Construction details showing Copper, Felt Paper, and Caulk under Base Plates with Strapping at all Studs





First Days of Excavation





Drywell to Capture Excess Run-Off



Finished Drywell



Foundation Work to LEED Specifications





Advanced Framing Techniques to Minimize Waste





Boulder Walls for Erosion Control





55' Infinity Pool with Spa, Reef, and Fire Pit



Elevated Slab in Foreground has 5000 Gallon Cistern under for Irrigation Water Requirements



Eco-friendly Hyacinth Furniture



Eco-friendly Recycled Synthetic Outdoor Furniture



Reclaimed Teak Zen Table



Reclaimed Teak Day Bed



Modern Primitive Bench



Primitive Mask



Antique Carved Planter



Zen Garden Antique Planter



Carved Coconut



Tall Floor Lamp for Great Room



Bronze Plate



Glass Bowl



Planting Kaua'i Native Fauna

